

VANGUARD

EQUIPMENT, INC.

VP 72H Pipelayer Kit



Weight

Operating Weight 29 770 kg 65,632 lb

Lift Capacity

Lift Capacity at Tipping Point
- ISO 8813 40 823 kg 90,000 lb

Distributed Exclusively by:



Your Global Partner for Pipeline Solutions

Vanguard VP 72H Pipelayer Kit - for installation on used CAT tractors.

The kit is engineered to fit both open and enclosed cabs on the following machines:

VP 72H - D6T T4i LGP

VP 72H - D6T T3 LGP

VP 72H - D6R S3 LGP

VP 72H - D6R S2 LGP

Integrated, Durable Components

Boom and hook draw works are driven by independent hydraulic winches. The compact design of the counterweight provides maximum lift capability and optimum weight distribution. The drawbar is able to accommodate a wide range of attachments.

Serviceability and Customer Support

Knowledgeable product support team to assist with equipment guidance, purpose-built parts supply and coordination of local Cat dealer service.

Contents

Pipelayer Components	3
Controls & Accessories	4
Lifting Capacities	5
VP 72H - D6T T4i LGP Specifications	6
VP 72H - D6T T3 LGP Specifications	7
VP 72H - D6R S3 LGP Specifications	7
VP 72H - D6R S2 LGP Specifications	8

Manufactured by:
Vanguard Equipment, Inc.
15627 E. Pine St.
Tulsa, OK 74116
Tel. 918-437-1796
www.vanguardequip.com



Pipelayer

Integrated, robust components

Winches

Boom and hook draw works are driven by independent hydraulic winches. Oil-disc brakes provide smooth operation and positive retention of boom and hook positions. A modular design allows for fast replacement, easy field service and testing. Centralized hydraulic test ports assist with troubleshooting. Infinitely variable speed controls for boom and hook allow for precise operator control. Emergency quick drop function on load line control allows the operator to drop the load quickly.

Counterweight

Hydraulically extended counterweight provides smooth, controlled weight-balance adjustment. The compact design of the counterweight provides maximum lift capability and optimum weight distribution. Dual action hydraulic counterweight relief valves provide added protection for personnel during operations and servicing activities. A manual mechanical safety lock ensures secure lock-out for worry free servicing.

Blocks & Hook

The heavy-lifting components include hook and boom blocks with sleeve bearings, a forged hook with latch and ductile iron sheaves. The high-performance cable enhances flexibility, strength and crush resistance.

Drawbar

The robust drawbar is able to accommodate a wide range of attachments. The solid, frame-bolted design is secure for train attachment or anchor tractor use.

Boom

The light weight, durable boom features high tensile strength steel construction for narrow structures and maximum visibility to the work area. A 6.1 m (20 ft.) boom is standard with large box section and both a 7.3 m (24 ft.) and 8.5 m (28 ft.) boom are optional.



Implement Controls and Accessories

Ergonomically Designed for Ease of Operation



Pipelayer Control

Dual control levers place all of the boom and hook function controls in one hand.

Quick Drop Control

When activated, the quick drop control will allow the load on the hook to free fall to the ground. This control is only for use in emergency situations where the load must be released immediately.

Enclosed Cab

Sliding Window

Slidable window which allows operator to reach winch cables.

Camera and Monitor

The kit provides vision of both the load blocks and front of the machine.

Mirrors

For rear vision

Open Cab

Optional Forced-Air Heater

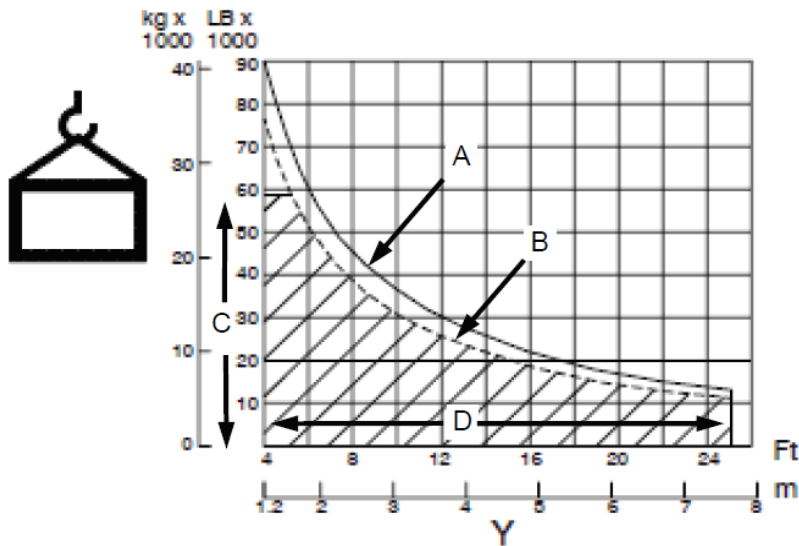
An optional forced-air heater is available for added operator comfort in colder weather.



Lifting Capacities

VP 72H Pipelayer

Wire rope diameter	19.05 mm (0.75 inch)
Minimum breaking strength of the wire rope	261.56 kN (58,800 lb)
4 part load line	
4 part boom line	
Mass of the extended counterweight	5 822 kg (12,835 lb)
Standard boom length	6.1 m (20 ft)
Total operating weight of the machine	29 770 kg (65,632 lb)



Legend

The following are as per ANSI/ASME B30.14, ISO 8813: 1992:

- (A) Lift capacity at tipping point
- (B) Rated Lift capacity
- (Y) W12 Load overhang
- (C) Rated tipping load lift capacity
- (D) Working range

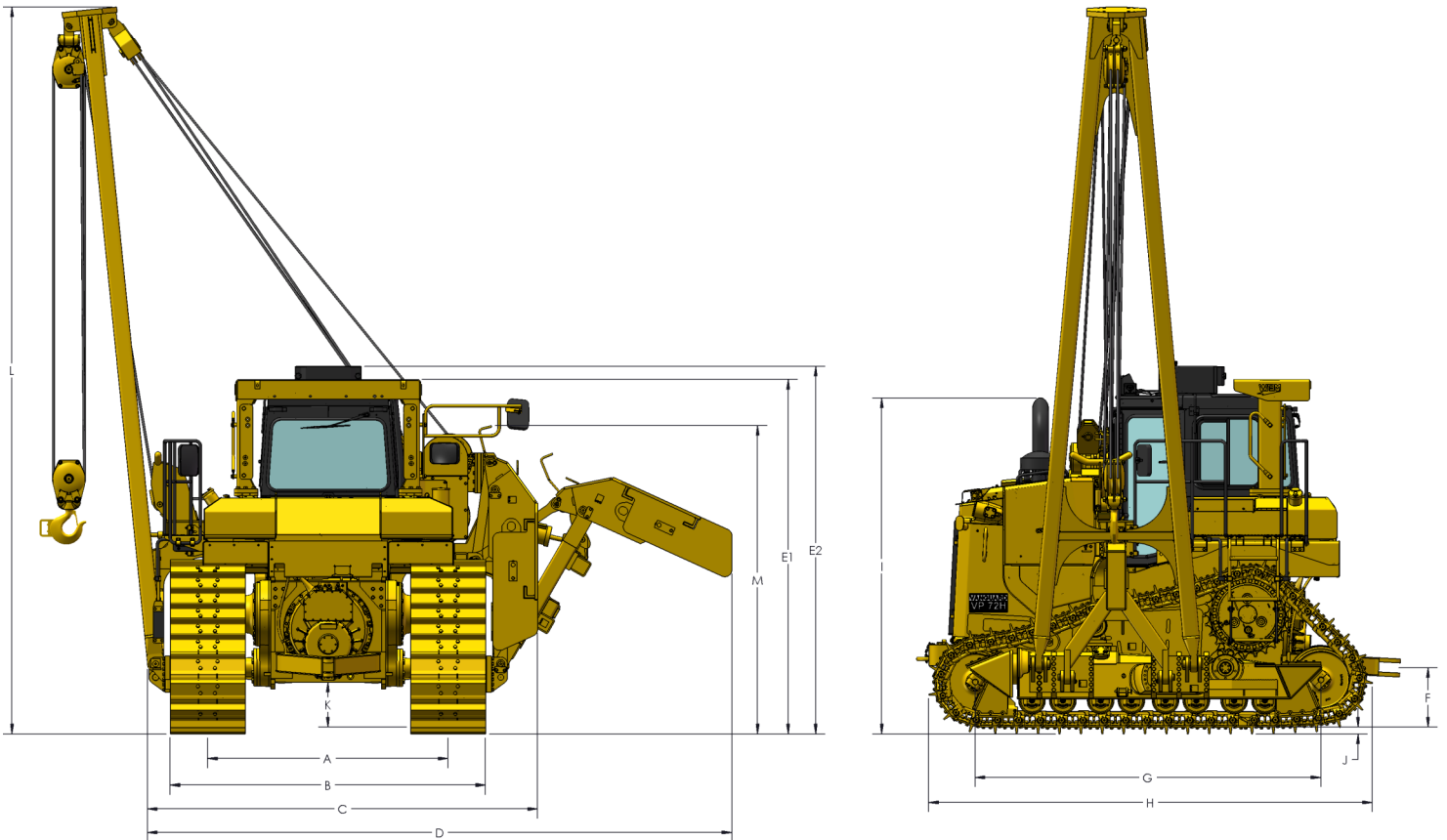
Intended Use

This machine is a Pipelayer that is described in ISO 6165:2001. The machine is intended to perform the following functions: lift, handle, and lay down pipe with a side mounted boom.

Restrictions to Application and Configuration

The maximum lift capacity is 40 823 kg (90,000 lb.)

VP 72H Specifications



VP 72H - D6T T4i LGP

DIMENSION	DESCRIPTION	METRIC (mm) STANDARD	
A*	Track Gauge	2286	7 ft 6 in
B*	Width of Tractor (710 mm [28 in.] shoes)	2997	9 ft 10 in
C	Width of Machine - boom removed	3700	12 ft 2 in
C	Width of Machine - counterweight and boom removed	3426	11 ft 3 in
D	Width of Machine - counterweight extended	5542	18 ft 3 in
E1	Machine Height - tip of grouser to top of ROPS (OROPS Height)	3360	11 ft 1 in
E2	Machine Height - tip of grouser to top of HVAC unit (EROPS only)	3485	11 ft 6 in
F*	Drawbar Height - from ground face of shoe to centre of clevis	561	22 in
G*	Length of Track on Ground	3250	10 ft 8 in
H	Length of Basic Tractor	4247	13 ft 11 in
H	Length of Basic Tractor with drawbar	4498	14 ft 9 in
H	Length of Basic Tractor with winch	4644	15 ft 3 in
I*	Height over stack from tip of grouser	3176	10 ft 5 in
J*	Grouser Height	65	2.6 in
K*	Ground Clearance (SAE J1234)	434	17 in
L	Boom Height from tip of grouser at ISO 88.13 1.25 m overhang - 20 ft boom	6891	22 ft 8 in
M	Height of counterweight latch from tip of grouser	2848	9 ft 5 in

* = Tractor Dependent

VP 72H - D6T T3 LGP

DIMENSION	DESCRIPTION	METRIC (mm)	STANDARD
A*	Track Gauge	2286	7 ft 6 in
B*	Width of Tractor (710 mm [28 in.] shoes)	2997	9 ft 10 in
C	Width of Machine - boom removed	3700	12 ft 2 in
C	Width of Machine - counterweight and boom removed	3426	11 ft 3 in
D	Width of Machine - counterweight extended	5542	18 ft 3 in
E1	Machine Height - tip of grouser to top of ROPS (OROPS Height)	3360	11 ft 1 in
E2	Machine Height - tip of grouser to top of HVAC unit (EROPS only)	3485	11 ft 6 in
F*	Drawbar Height - from ground face of shoe to centre of clevis	561	22 in
G*	Length of Track on Ground	3275	10 ft 9 in
H	Length of Basic Tractor	4247	13 ft 11 in
H	Length of Basic Tractor with drawbar	4498	14 ft 9 in
H	Length of Basic Tractor with winch	4644	15 ft 3 in
I*	Height over stack from tip of grouser	3193	10 ft 6 in
J*	Grouser Height	65	2.6 in
K*	Ground Clearance (SAE J1234)	433	17 in
L	Boom Height from tip of grouser at ISO 88.13 1.25 m overhang - 20 ft boom	6891	22 ft 8 in
M	Height of counterweight latch from tip of grouser	2848	9 ft 5 in

* = Tractor Dependent

VP 72H - D6R S3 LGP

DIMENSION	DESCRIPTION	METRIC (mm)	STANDARD
A*	Track Gauge	2286	7 ft 6 in
B*	Width of Tractor (710 mm [28 in.] shoes)	2997	9 ft 10 in
C	Width of Machine - boom removed	3700	12 ft 2 in
C	Width of Machine - counterweight and boom removed	3426	11 ft 3 in
D	Width of Machine - counterweight extended	5542	18 ft 3 in
E1	Machine Height - tip of grouser to top of ROPS (OROPS Height)	3360	11 ft 1 in
E2	Machine Height - tip of grouser to top of HVAC unit (EROPS only)	3485	11 ft 6 in
F*	Drawbar Height - from ground face of shoe to centre of clevis	561	22 in
G*	Length of Track on Ground	3275	10 ft 9 in
H	Length of Basic Tractor	4247	13 ft 11 in
H	Length of Basic Tractor with drawbar	4498	14 ft 9 in
H	Length of Basic Tractor with winch	4644	15 ft 3 in
I*	Height over stack from tip of grouser	3193	10 ft 6 in
J*	Grouser Height	65	2.6 in
K*	Ground Clearance (SAE J1234)	433	17 in
L	Boom Height from tip of grouser at ISO 88.13 1.25 m overhang - 20 ft boom	6891	22 ft 8 in
M	Height of counterweight latch from tip of grouser	2848	9 ft 5 in

* = Tractor Dependent

VP 72H - D6R S2 LGP

DIMENSION	DESCRIPTION	METRIC (mm)	STANDARD
A*	Track Gauge	2225	7 ft 4 in
B*	Width of Tractor (710 mm [28 in.] shoes)	2936	9 ft 8 in
C	Width of Machine - boom removed	3639	12 ft 0 in
C	Width of Machine - counterweight and boom removed	3365	11 ft 1 in
D	Width of Machine - counterweight extended	5481	18 ft 0 in
E1	Machine Height - tip of grouser to top of ROPS (OROPS Height)	3360	11 ft 1 in
E2	Machine Height - tip of grouser to top of HVAC unit (EROPS only)	3485	11ft 6 in
F*	Drawbar Height - from ground face of shoe to centre of clevis	561	22 in
G*	Length of Track on Ground	3243	10 ft 8 in
H	Length of Basic Tractor	4247	13 ft 11 in
H	Length of Basic Tractor with drawbar	4498	14 ft 9 in
H	Length of Basic Tractor with winch	4644	15 ft 3 in
I*	Height over stack from tip of grouser	3193	10 ft 6 in
J*	Grouser Height	65	2.6 in
K*	Ground Clearance (SAE J1234)	433	17 in
L	Boom Height from tip of grouser at ISO 88.13 1.25 m overhang - 20 ft boom	6891	22 ft 8 in
M	Height of counterweight latch from tip of grouser	2848	9 ft 5 in

* = Tractor Dependent

